



**Ambitious
about Autism**

What is Personal Protective Equipment?

A visual story to explain PPE



What is PPE?

You might have heard about PPE on the news. It means Personal Protective Equipment. You may have seen people wearing PPE at home, outside or in buildings. It can be used to keep different parts of a person safe.

Personal

This means that it is for a **person**. You might see **lots of people** using PPE in the hospital. This includes **doctors, nurses and anyone who works in the hospital**.



Protective

This means that it is to **keep someone safe**. Their actions are to **keep themselves and others safe**. They are keeping themselves safe from germs and infection.



Equipment

This means that it is what the person is using. There are lots of different things people are using to stay safe. People might wear lots of equipment or a few pieces.



PPE for a face might look like:



Face shield



Eye protection



Face mask



Hair protection

PPE for a person's body might look like:



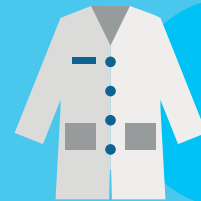
Gloves



Shoes



Overalls



Gown

People might wear lots of personal protective equipment pieces or only a few. This will depend on where they are.

What are hospital staff wearing?

If you go to hospital or get medical help at a GP surgery or health centre you may see staff wearing personal protective equipment. It might look scary as you may not be able to see all of someone's face. Staff have tried to make this less scary for patients and visitors.



Some may write their names on their clothes or have photos of their faces.



Staying clean

A lot of PPE is only meant to be worn once. This means that people might change what they are wearing when they do different tasks. This is to stop germs from spreading.



People are washing their hands more and for longer to keep themselves clean.

You should wash your hands for at least 20 seconds.



We are Ambitious about Autism

Ambitious about Autism is the national charity for children and young people with autism.

We provide services, raise awareness and understanding, and campaign for social and policy change. Through TreeHouse School, The Rise School and Ambitious College, we offer specialist education and support.

Our ambition is to make the ordinary possible for more children and young people with autism.

Contact us

The Pears National Centre for Autism Education
Woodside Avenue, London N10 3JA

☎ 020 8815 5444

✉ info@ambitiousaboutautism.org.uk

🌐 ambitiousaboutautism.org.uk

Follow us

🐦 [ambitiousautism](https://twitter.com/ambitiousautism)

📘 [ambitiousaboutautism](https://www.facebook.com/ambitiousaboutautism)

📍 [@ambitiousaboutautism](https://www.instagram.com/ambitiousaboutautism)



**Ambitious
about Autism**

Ambitious about Autism is a registered charity in England and Wales: 1063184 and a registered company: 3375255.

Ambitious about Autism Schools Trust is an exempt charity in England and Wales and a registered company: 08335297.